



**INVERT**<sup>™</sup>

**MINI**



[WWW.INVERTPAINTBALL.COM](http://WWW.INVERTPAINTBALL.COM)





No part of this document may be copied or reproduced in any form or by any means without the prior written consent of Invert Paintball and KEE Action Sports, its assigns and/or its distributors.

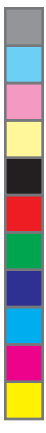
Notice is hereby given that this manual is part of the article owned in whole by KEE Action Sports, its assigns and/or its distributors, known as indicated. In this manual and drawings. All rights of manufacture and reproduction of such articles or any part thereof are reserved by KEE Action Sports, its assigns and/or its distributors. Neither said article nor any part thereof may be manufactured or reproduced except by written authorization from KEE Action Sports, its assigns and/or its distributors. All proprietary rights and information are the sole property of KEE Action Sports, its assigns and/or its distributors.

Invert Paintball brand for all intents and purposes is owned wholly by KEE Action Sports. KEE Action Sports delivers this marker with the understanding that KEE Action Sports, its assigns and/or its distributors assumes no responsibility for its resale or safe handling. Serious injury or death may occur if mishandled, abused, or the safety instructions are ignored. KEE Action Sports, its assigns and/or its distributors assumes no responsibility for physical injury or property damage resulting from its use.

KEE Action Sports, its assigns and/or its distributors, makes no warranties with respect to this documentation and disclaims any implied warranties of merchantability or fitness for a particular purpose. The information in this document is subject to change without notice. KEE Action Sports, its assigns and/or distributors assumes no responsibility for any errors that may appear in this document.

This is not a toy. Misuse may cause serious injury or death. The user and any person within range must wear eye protection designed specifically for paintball use. Recommend 18 years of age or older to purchase. Persons under 18 years of age must have adult supervision. Obey all local, state and federal laws. Follow the rules of safe paintball marker handling.





## TABLE OF CONTENTS

-Section	
1. Rules for Safe Marker Handling.....	pg.4
2. Introduction and Specifications.....	pg.4
3. Battery Replacement and Life Indicator.....	pg.5
4. Compressed Air/Nitrogen Supply.....	pg.6
5. Basic Operation.....	pg.6
6. Firing the MINI.....	pg.7
7. Break beam Eyes Operation.....	pg.8
8. Unloading the MINI.....	pg.8
9. Regulator and Velocity Adjustments.....	pg.8
10. Optimus Board.....	pg.10
11. Trigger Adjustments.....	pg.13
12. Mini Assembly/Disassembly and Maintenance.....	pg.13
13. Storage and Transportation.....	pg.20
14. Trouble Shooting Guide.....	pg.21
15. Diagram and Parts List.....	pg.26
16. Warranty Information.....	pg.29





**MINI**<sup>™</sup>

## 1. RULES FOR SAFE MARKER HANDLING

**IMPORTANT:** Never carry your Mini uncased when not on a playing field. The non-playing public and law enforcement personnel may not be able to distinguish between a paintball marker and firearm. For your own safety and to protect the image of the sport, always carry your Mini in a suitable marker case or in the box in which it was shipped.

- Treat every marker as if it were loaded.
- Never look down the barrel of a paintball marker.
- Keep your finger off the trigger until ready to shoot.
- Never point the marker at anything you don't wish to shoot.
- Keep the marker on "safe" until ready to shoot.
- Keep the barrel blocking device in/ on the marker's muzzle when not shooting.
- Always remove paintballs and propellant source before disassembly.
- After removing propellant source, point marker in safe direction and discharge until marker is degassed.
- Store the marker unloaded and degassed in a secure place.
- Follow warnings listed on propellant source for handling and storage.
- Do not shoot at fragile objects such as windows.
- Every person within range must wear eye, face and ear protection designed specifically to stop paintballs and meeting ASTM standard F1776.
- Always measure your marker's velocity before playing paintball and never shoot at velocities in excess of 91.44 meters (300 feet-per-second).

**\* READ OWNERS MANUAL BEFORE USING.\***

## 2. INTRODUCTION AND SPECIFICATIONS

Welcome to the world of the Invert MINI. The MINI is a modern culmination in the pursuit of speed, technology, weight reduction, and overall performance. It started with radical imaginative concepts, which in turn inspired years of research and development, plus countless hours of testing and engineering. As a result the MINI features innovative electronic and pneumatic technology that challenge the paradigm that formerly defined "how a high performance paintball marker should function". The patented valve design, Slip Stream(TM) Solenoid, and Hall Effect Sensor Trigger, set new standards for marker technology. The MINI is precision engineered from aircraft grade aluminum to meet the demands of the most competitive players, teams, and climates. The ultimate intent of the MINI is to exceed your expectations.

Invert Paintball expects you to play hard and play frequently and thus the MINI was built with this in mind. All internal parts, wear, and contact surfaces have been heat treated or hard anodized. The toughest and most resilient materials and components have been used in the construction of this marker.

The MINI operates on low-pressure. The main operating pressure is 180-200 PSI. The pressure can be nominally adjusted and monitored visually via the gauge on the bottom-line regulator. There is no secondary regulator to worry about.

The MINI comes equipped to accept 1.03" (outer dimension) standard-gravity feed loaders as well as most agitating and force-feed loaders. Fit the loader directly into the vertical feed tube and always twist it down in a CLOCKWISE direction.

The MINI uses .68 Caliber, water-soluble paintballs, readily available at paintball pro-shops, commercial playing fields, and many sporting goods stores. The paintballs are fed from the loader through the direct vertical feed port and into the breach of the marker.





### 3. BATTERY REPLACEMENT AND LIFE INDICATOR

The MINI requires a single 9-volt battery as the electronic power source. The use of long life batteries is recommended. The 9-volt battery is located in the front fore-grip in front of the trigger guard. The battery is accessed through the removable left side plate on the front fore-grip.

Confirm that the marker is Off. Remove the screw at the bottom that secures the left side plate in the front fore-grip. If there is already a battery in the fore-grip, gently disconnect the battery from the battery harness, and then connect a fresh 9-Volt battery to the harness. Carefully re-insert battery and harness back into the battery compartment with the harness pointed down towards the bottom of the grip. Make sure that there are no abrupt kinks and the wires are comfortably placed, do not force them into place. Then re-install the fore-grip side plate and screw.

The MINI also has a Battery Life indicator. If in standard operation and the LED flashes with a GREEN color then the battery is GOOD, if the LED is ORANGE the battery is fairly depleted and you should change battery soon, or if the LED is RED then there is less than 20% of the full battery strength remaining and battery should be replaced immediately.



#### Notes:

- Some rechargeable batteries are too large for the MINI battery compartment. If they don't fit, please don't force them as this may damage the MINI.
- The stock circuit board does not keep user defined settings. You must change the battery quickly to keep your settings. If the battery is not changed quickly the Circuit board will go back to the factory default settings.

### INVERT MINI SPECIFICATIONS

- Model- Invert Mini
- Barrel- 12" ported
- Caliber-68
- Action- Semi auto, Ramping, and Full auto
- Air source- Compressed air
- Battery- One 9 volt
- Cycle Rate- 20 BPS
- Main Body material- Aluminum
- Accuracy Range- 150 + ft
- Weight- 1.99 lbs

### INCLUDED WITH YOUR MINI

- 12" Barrel (.691 bore)
- Allen Keys
- Spare Parts
- Barrel Plug
- One 9 Volt Battery (installed)



**MINI**<sup>TM</sup>

#### 4. COMPRESSED AIR/NITROGEN SUPPLY

The MINI is designed to work with Compressed Air/Nitrogen Only. Do Not use CO<sub>2</sub>, as it will damage your Mini.

Consult the place where you purchased your MINI, or a recognized and competent air smith, for instruction in the safe handling of compressed-air cylinders before purchasing or connecting one to your MINI.

The MINI utilizes a fully functional regulator at the bottom of the grip frame that doubles as an ASA (Air Source Adaptor) or receiver for a standard threaded pre-set output compressed air system. It is strongly recommended that a very high-flow "low pressure" (350-450 psi) fixed-output system is utilized as an air source for your MINI. If you are using an adjustable output regulator system, the output pressure should be between 350-450 psi.

#### BEFORE PRESSURIZING YOUR MINI

- Check to make sure that you and anyone within range are wearing eye protection designed specifically for paintball.
- Double check that all screws are tightened and no parts are loose before installing your tank.
- Ensure you have a barrel plug, barrel sock or other specifically designed barrel-blocking device in place.
- Make sure there are no paintballs in the marker and that the MINI is turned Off.
- Air can now be applied and the marker will become pressurized.

#### Notes:

- Remember compressed air or nitrogen systems can be extremely dangerous if misused or improperly handled. Use only cylinders meeting D.O.T. or regionally defined specifications. Do not perform any work to your tank or tank regulator.
- Never disassemble your tank or tank regulator. Only a qualified and trained technician should perform work on your tank and tank regulator.
- Never add any lubricants or greases into the fill adapter on your tank regulator or into the Mini's regulator

#### 5. BASIC OPERATION

- Safety and safe marker handling are the most important aspects of paintball sports. Please practice each of the following steps with an unloaded marker before attempting to charge your marker with compressed air and paintballs.

- Do not install compressed air or load paintballs into your MINI until you feel completely confident with your ability to handle your MINI safely.

- Keep your finger out of the trigger guard and away from the trigger; point the muzzle of the marker in a safe direction at all times. Keep the marker turned off until ready to operate. The MINI uses an On-Off button for one of its safety devices.

- Always keep your MINI pointed in a safe direction. Always use a barrel plug or barrel blocking device. Always use ASTM approved paintball specific eye protection in any areas where paintball markers may be discharged. Remember that the ultimate safety device is you, the operator.

#### SWITCHING ON YOUR MINI

To switch the MINI On, locate the Power Button on the back side of the front fore-grip, in front of the trigger guard and directly under the LED. Push and hold the button for 2 seconds and the LED light will turn GREEN and then to RED. Release button and the LED will intermittently flash green indicating that the marker is now ON and LIVE.





**MINI™**

### **SWITCHING OFF YOUR MINI**

Push and hold the Power Button on the front fore-grip for 2 seconds and the LED will turn solid RED and then to GREEN. Release button and the MINI will switch Off.

### **AUTOMATIC OFF FEATURE**

The Invert MINI also has an "Automatic OFF" feature. If you accidentally leave your MINI powered up, it will shut itself off after approximately 1 hour of inactivity.

### **EYE FUNCTION**

The MINI board is pre-programmed to activate the eye system each time the marker is powered up. See Section 7 (Break beam Eyes Operation) for more details.

### **INSTALLING A LOADER AND PAINTBALLS**

The MINI comes equipped to accept 1.03" (outer dimension) standard-gravity feed loaders as well as most agitating and force-feed loaders. Fit the loader directly into the feed neck. It might be necessary to adjust the clamp to your loader. Always twist the loader in a Clockwise direction to prevent feed neck thread damage.

The MINI uses .68 caliber, water-soluble paintballs, readily available at paintball pro-shops, commercial playing fields, and many sporting goods stores. The paintballs are fed from the loader through the direct vertical feed port and into the breech of the marker.

### **6. FIRING THE MINI**

Keep your finger out of the trigger guard and away from the trigger, point the muzzle of your marker in a safe direction at all times during this process. Be sure your goggles are securely in place and make sure the MINI marker is off.

**Warning-** Everyone within firing range should always use paintball approved eye and face protection in the presence of live paintball markers.

- Place the empty loader onto the marker.
- Be sure that it is securely mounted in place.
- Apply the compressed gas, pressurizing the marker.
- Put the paintballs into the loader.
- Remove the barrel plug, sock or barrel-blocking device.
- Aim the MINI in a safe direction.
- Turn the MINI on: Push the On/Off button for 2 seconds until the LED light changes from solid Green to solid Red, then release button and LED should do a rapid flashing Green.
- Aim the MINI at the target.
- Pull the trigger with a smooth squeezing motion.



**MINI™**

## 7. BREAK BEAM EYES OPERATION

The MINI uses a break beam eye system to determine the absence or presence of a ball for the purposes of reduced paint breakage and optimum rates of fire. The MINI board is pre-programmed to activate the eye system each time the marker is powered up.

To turn the eyes Off, ensure that there are no paintballs in the MINI breech or feed-neck, make sure the marker is switched Off, and then while pulling and holding the trigger, turn the marker on. A quick double blinking green LED will indicate that the eye system has been deactivated.

To turn the eyes back on, simply tap the power button one time quickly.

A slow consistent single flashing green LED indicates that the eyes are ON with no ball in the breech and a rapid flashing green LED indicates that there is a ball in the breech.



For optimal performance of the MINI eyes, keep the inside of the MINI breech clean and clear of broken paint, paint residue, or other debris.

Although the eyes can be cleaned via cleaning the breech of the MINI marker, if the eyes need to be accessed please follow the steps outlined in the Main Body Assembly section of this manual.

## 8. UNLOADING THE MINI

- Always keep your Mini pointed in a safe direction and always keep your protective eye, face and ear wear on until marker is completely unloaded.
- Be sure your finger is away from the trigger area.
- Place the barrel plug, sock, or barrel blocking device into the end of the barrel.
- Turn the Mini Off by pressing and holding the On/Off button. The Led will turn from green to red. Observe the light to make sure it is no longer lit.

- Remove your pressurized gas source by slowly and carefully unscrewing it.
- If you are using an electronic loader make sure loader is completely turned Off.

- Slightly tilt the marker so that the loader is lower than the body.
- Remove the loader by undoing the clamp and spinning it in a clockwise direction and gently lifting it.
- Read the pressure gauge and make sure the pressure reads 0 PSI.
- DO NOT look down the barrel but look down the feed neck to make sure there are no paintballs in the breech.
- Remove the barrel from the marker.
- Make sure there are no more paintballs remaining in the barrel.

## 9. REGULATOR AND VELOCITY ADJUSTMENT

The MINI utilizes a fully functional MINI Bottom-line Regulator at the bottom of the grip frame that doubles as an ASA adaptor/receiver for a standard threaded pre-set output compressed air system. This unique regulator system channels air through a chamber in the grip frame eliminating the need for external macro line and fittings. The MINI Bottom-line Regulator controls the amount of air pressure going from your compressed air system into the maker itself.

The MINI regulator should be pre-set at 200 PSI as this is the best operating pressure for firing the marker. However, if over time you do need to adjust the pressure only use the Regulator Adjuster Screw on the front of your MINI Bottom-line Regulator.





**MINI™**

## REGULATOR ADJUSTMENT

If adjustments are needed use a 3/16" Allen key and insert it into the regulator adjustment screw. This is located in the front of the regulator.

- To Increase pressure turn Clockwise.
- To Decrease pressure turn Counter-clockwise.



**Notes:**

- Always watch the gauge as you are adjusting the pressure.
- Do not use CO2!!!
- The use of a low pressure output compressed air tank is recommended.
- The Bottom-line regulator should not be disassembled.
- Never set the regulator above 200 psi.



**Notes:**

- This marker was designed with safety and safety standards in mind. If you attempt to shoot paintballs at a higher velocity than established safety standards, the marker may not function properly.
- If you attempt to operate the marker at extremely high velocities, the internals will not function properly.
- This marker is not designed to shoot above the safety limits established by industry standards but under certain conditions it may. It is therefore important to check the velocity each time before playing with your Mini.

## ADJUSTING THE VELOCITY

At the back of the MINI main body is the Bolt Guide Cap. The Allen screw in the bolt guide cap serves as your velocity adjuster. Confirm that the pressure on your MINI Bottom-line Regulator is at 200 PSI. Then you can increase or decrease the velocity on your MINI by tightening or loosening the velocity adjustment screw, with a 1/4" inch Allen wrench.

- To Increase Velocity

Unscrew or loosen the velocity adjustment screw by turning it counter-clockwise. Rotate the velocity adjustment screw counter-clockwise in small increments (1/4 turn or less), stopping between slight turns to test velocity, until desired velocity is achieved. Do not back the adjuster out passed being flush. Stop if you hear an air leak, and adjust back in a 1/4 turn. A paintball specific radar chronograph should be used to accurately measure your velocity.





**MINI™**

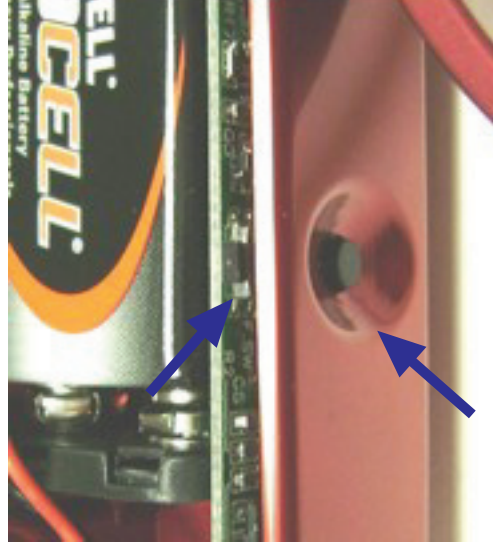
## 10. OPTIMUS BOARD

The Invert MINI is driven by an Optimus™ Board. The Optimus™ Board features several modes and functions that are listed below. The Optimus™ Board is located inside the front fore-grip.

Before adjusting Functions, remove the propellant source from the MINI and install barrel blocking device.

The Optimus™ Board inside your MINI features 5 functions. It uses a 3 color LED indicator on the backside of the front fore-grip to indicate functions and modes during programming.

To access and set the Optimus™ Board, place MINI on a flat surface with muzzle pointing to the left. Using a 5/64" Allen wrench, remove the screw that secures the left side plate to the front fore-grip. This will expose the battery and the Optimus™ Board. Please locate the (A) Function Key, which is a small black button on the rear of the board, to the left and slightly above the Power Button (B), marked DIP (see illustration). It is not necessary to remove the board from the housing in order to manage settings.



10

## FUNCTIONS, MODES

The MINI must be Off to begin managing functions. While the MINI is Off, press the Function Key to access one of the 5 different functions and make adjustments.

1. Firing Modes (**Solid Red LED**)
2. Rate of Fire (**Solid Green LED**)
3. Dwell (**Solid Orange LED**)
4. BIP Delay (**Flashing Red LED**)
5. Ramping Point (**Quick-Flashing Green LED**)

- Once you push the Function Key the appropriate amount of times to get into the desired function, the LED will flash a specific color per the descriptions below followed by a number of flashes which will indicate the current setting in that function.



- To increase or decrease a setting of a function, use the Power Button(B) and Function Key(A). The Power Button will decrease a setting by one every time it is pushed. The Function Key will increase a setting by one every time it is pushed. The setting can be changed when the function you select has a solid light which will come before the board flashes the current setting.

**Example:** Press the Function Key 1 time and you will be in "Function 1" which is "Firing Modes" or press the Function Key 3 times and you will be in "Function 3" which is "Dwell".

## FIRING MODES

- WILL BE INDICATED BY **SOLID RED LED**

To get into the Firing Mode Function, make sure the Power is Off, then push the Function Key one time and LED will turn to Red and then flash to indicate the Firing Mode that it is currently in. For example the Default mode is Semi-Auto which will be demonstrated by 1 flash.







**MINI™**

### **THERE ARE 4 FIRING MODES:**

- Semi-Auto/NPPL (1 Flash) - One shot per trigger pull. Max ROF capped at 20 BPS.
- Ramping/PSP (2 Flashes) - The MINI will operate in semi-auto mode for the first 3 shots; then if player achieves the minimum trigger pull as defined by the Ramping Point value in Function 5, which is defaulted to 4 trigger pulls per second for this mode, the MINI will ramp to the Rate of Fire value in Function 2, which is defaulted to 13 shots per second for this mode.
- Full-Auto/NXL (3 Flashes) - The MINI will operate in semi-auto mode for the first 3 shots; then pull and hold trigger on the 4th shot, and the MINI will fire full-auto at the Rate of Fire value in Function 2, which is defaulted to 13 shots per second for this mode.
- Ramping/Millen. (4 Flashes) - The MINI will operate in a semi-auto mode until player achieves the minimum trigger pull as defined by the Ramping Point value in Function 5, which is defaulted to 6 trigger pulls per second for this mode. At that point, and as long as 6 trigger pulls per second are maintained, the MINI will ramp to the Rate of Fire value in Function 2, which is defaulted to 12 shots per second for this mode.

**Note:** After modes 2 through 4 are selected, it is possible to raise or lower both the Rate of Fire and Ramping Point values in case the tournament rules change.

To cycle through the Firing Modes you use both the Power Button and Function Key. Once you push the Function Key one time to get into the Firing Modes the LED will flash Red. While the LED is lit Red, push the Function Key to cycle up (from 1 for Semi to 4 for Full Auto) and to go the opposite direction (from 4 at Full Auto through to 1 for Semi). Use the Power Button to cycle down.

**Example:** If you are in the Default Semi-Auto mode and want to go to Full-Auto/NXL, Push the Function Key twice while the LED is lit Red. Upon release you should see the LED flash red 3 times. To move from Full-Auto/NXL to Ramping/PSP, push the Function One time to get into firing modes, then while LED is lit solid Red, push Power Button one time and release. The LED should flash Red two times to indicate that you are now in Firing Mode 2-Ramping/PSP.

### **MAX RATE-OF-FIRE (ROF)**

-WILL BE INDICATED BY **SOLID GREEN LED**

To get into the ROF Function, make sure Power is Off, then push Function Key two times and LED will turn to a solid Green and then flash to indicate the Rate of Fire (1-20) that you are currently using. Default is 15 Bps (balls per second). To adjust ROF push the Function Key two times and while the LED is lit a solid Green use either the Function Key (to toggle up or increase your ROF) or the Power Button (to decrease the ROF).

**Example-** To start you will be in a Default setting of 15 BPS. Push the Function Key twice to get into ROF Mode. While the LED is lit a solid Green, press the Function Key 5 times to take you to 20 BPS. Upon releasing the Function Key, the LED should then blink 20 times indicating your new Rate of Fire.

The easy way to know your rate of fire: number of flashes divided by two then add ten.

**Example:** 15 flashes / 2 = 7.5, 7.5 + 10 = 17.5 BPS

### **DWELL SETTING**

- WILL BE INDICATED BY **SOLID ORANGE LED**

To get into the Dwell Function, make sure the Power is Off, then push the Function Key three times and the LED will turn to a solid Orange and then flash to indicate the Dwell Setting that you are currently at. The MINI Dwell Setting is defaulted at setting 28 (28 x .25 milliseconds = 7 ms). Dwell is adjustable from 1 to 45. This Function is also controlled through the same techniques used for Firing Modes and ROF Functions, while the LED is lit a solid ORANGE, increase or decrease your Dwell by increments of .25 milliseconds.



# MINI™

## FLASHES/ROF

- 1 Flash = 10.5 BPS
- 2 Flash = 11 BPS
- 3 Flash = 11.5 BPS
- 4 Flash = 12 BPS
- 5 Flash = 12.5 BPS
- 6 Flash = 13 BPS
- 7 Flash = 13.5 BPS
- 8 Flash = 14 BPS
- 9 Flash = 14.5 BPS
- 10 Flash = 15 BPS
- 11 Flash = 15.5 BPS
- 12 Flash = 16 BPS
- 13 Flash = 16.5 BPS
- 14 Flash = 17 BPS
- 15 Flash = 17.5 BPS
- 16 Flash = 18 BPS
- 17 Flash = 18.5 BPS
- 18 Flash = 19 BPS
- 19 Flash = 19.5 BPS
- 20 Flash = 20 BPS

## BIP (BALL IN PLACE) DELAY

- WILL BE INDICATED BY A QUICK FLASHING RED LED

To get into the BIP Function, make sure the Power is Off, then push the Function Key 4 times. The LED will quickly flash red to indicate that you are in the BIP Function. Then the LED will slowly flash to indicate the BIP Setting that you are currently using.

Default is (5) (One Flash = 1 millisecond). BIP is adjustable from 1 to 40 milliseconds. This Function is also controlled through the same techniques used for Firing Modes and ROF Functions. While the LED is Red, increase or decrease your BIP in 1 milliseconds increments.

**Note:** If you are not using a force-feed loader, it is recommended that you use a higher BIP setting.

## RAMPING POINT

- WILL BE INDICATED BY QUICK FLASHING GREEN LED

To get into the Ramping Point function make sure the Power is Off, then push the Function button 5 times and the LED will turn to a quickly flashing green and then slowly flash to indicate the ramping point setting you are currently using. The default ramping point for PSP firing mode is 3 (4 BPS). The default ramping point when firing mode is changed to millennium firing mode is 6 (6.5 BPS). Ramping Point is adjustable from (4 to 9.5 BPS). Please see chart for corresponding flashes and BPS settings.

## FACTORY BOARD RESET

There are 3 ways to reset the Optimus™ board to default factory settings.

- Turn the power Off then push the Function Key and Power Button at the same time.
- Remove the battery then simultaneously push and hold the Function Key and Power Button for a full 10 seconds.
- Disconnect the battery and leave it idle for 15 seconds.

## BOARD DEFAULTS

1. Firing Modes - 1 blink (Semi-auto)
2. Rate of Fire - 10 blinks (15 bps)
3. Dwell - 28 blinks (7 ms)
4. BIP Delay - 5 blinks (5 ms)
5. Ramping Point - 3 blinks (4 bps)

## RAMPING POINTS

Flashes/PTR (Pulls to Ramp)

- 3 Flash = 4 BPS
- 4 Flash = 4.5 BPS
- 5 Flash = 5.5 BPS
- 6 Flash = 6.5 BPS
- 7 Flash = 7.5 BPS
- 8 Flash = 8.5 BPS
- 9 Flash = 9.5 BPS





**MINI™**

## 11. TRIGGER ADJUSTMENTS

The MINI features a Hall Effect Sensor Trigger. There is no trigger switch to worry about, clog with paint, or break. The LED is also used to indicate trigger pulls. When no trigger pull is recognized, the LED flashes normally based on the status of the eyes and battery power level. When a trigger pull is activated, the LED will change to a dim RED Led for each trigger pull. Before making any trigger adjustments, it is recommended to de-gas the MINI, then switch On the circuit board with eyes turned Off to easily monitor the current activation point.

You will notice three (3) set screws in your trigger. These can be adjusted with a 1/16" Allen key.

-The first set screw is located at the bottom of the trigger. This is used to adjust rear movement range, and stop point.

-The second set screw is located in the top of the trigger. This set screw adjusts forward movement, and stop point.

-The third set screw is also located in the top of the trigger. This set screw adjusts the trigger activation point. For best results, the activation point should be set right in the middle of the total trigger movement from front to back.



### Notes:

- Normal activity may cause set screws to back out of adjustment. If necessary it is ok to use blue Loctite on your trigger set screws. However do not use an excessive amount. Make sure you make your adjustments carefully, and clean up any extra Loctite. Also allow it to dry several hours before using your MINI.
- If any of the set screws are over adjusted in any direction the MINI may not fire.
- If the trigger travel is adjusted too short, the MINI may fire on its own, repeatedly and/or uncontrollably.

## 12. MINI ASSEMBLY/DISASSEMBLY AND MAINTENANCE

**CAUTION:** Before attempting to perform any maintenance operations or any marker disassembly, make sure that all paintballs and propellant sources have been removed from the marker and that the regulator gauge reads 0 psi. Install a barrel blocking device, push Power button and hold for over 2 seconds until the Led light changes from Red to Green, and keep the MINI power Off.

### GENERAL MAINTENANCE

Keep your MINI clean and lubricated to eliminate the friction that would prevent reliable operation. Clean and lube the marker before each use, and do not put it away dirty. **USE NO OILS!** Do not use oils made for paintball markers, real firearms or pneumatic tools, do not use oils at all. Do Not use petroleum-based lubricants in the lubrication of this marker. Teflon or silicon (Non-spray only) lubricants designed for use on o-rings may be used for lubrication for the bolt area only of the main housing. Only use Paintball grease, Dow 33 is recommended.

### REMOVAL OF BOLT AND BOLT GUIDE ASSEMBLY

-Using a 1/8" Allen key, insert it into the rear frame screw, turn the Allen key counter-clockwise and completely remove the screw.

-This will allow you to pull out the Bolt and Bolt Guide Assembly. If assembly does not easily slide out, insert a barrel swab into the front of the body and push out the Bolt and Bolt Guide Assembly.





**MINI**

#### **MAINTENANCE OF BOLT AND BOLT GUIDE**

- Inspect the o-rings on both the bolt and bolt guide for any wear or damage. Replace damaged or worn o-rings if necessary.
- Lubricate all o-rings on Bolt and Bolt Guide with Dow 33 or supplied grease. Only a small amount is needed.



#### **MAINTENANCE OF POPPET**

- Use a 1/4" Allen key and insert it into the back of the Bolt Guide Cap. Turn counter clockwise until Bolt Guide Cap is completely removed.
- Inspect and lubricate Bolt Guide Cap O-ring.
- Use 1/8" Allen key and carefully insert it into the front of the Bolt Guide. Push Poppet Assembly out the back of the Bolt Guide.



#### **REPLACING THE POPPET SEAL**

-If there is a slight air leak evident coming through the bolt area, the poppet seal may be worn and need to be replaced. With the poppet removed, grab the poppet seal with pliers and unscrew the poppet by hand from the poppet seal. Do not grab the poppet with pliers or put in a vice as it may damage the brass. Install the new poppet seal by hand. Once tightened by hand, the poppet will hold the poppet seal in place and it should not come apart during operation.





**MINI™**

### REINSTALLATION OF POPPET, POPPET-SPRING AND BOLT GUIDE CAP

-Place poppet assembly into the back of the bolt guide and gently push forward. If installed properly the poppet assembly will be all the way forward resting on the bolt guide internal face. Make sure the poppet spring is seated straight in the back of the poppet

-Using the 1/4" Allen key, screw the Bolt guide cap clockwise back into the bolt guide. Screw the Bolt guide cap all the way in, then turn out 1/2 turn. Further adjustment over a chronograph will be needed to achieve desired velocity.

### REINSTALLATION OF MAIN SPRING, BOLT AND BOLT GUIDE ASSEMBLY

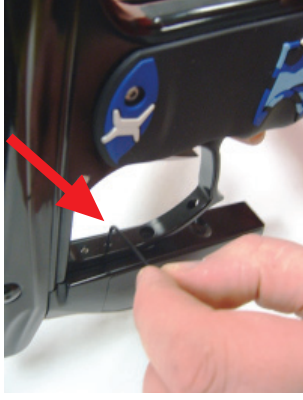
-Slide main spring onto bolt, and then bolt onto bolt guide, so it is one assembly. You will notice, one end of the spring is smaller and will lock onto the bolt. Insert assembly into the back of body.



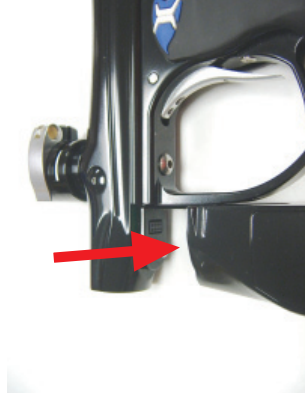
**Note:** On the top side of the bolt guide there is a small alignment hole at the rear of bolt guide. This must line up with the body alignment pin which sticks out the back of the body.  
-Holding the bolt assembly tight into the back of the body with one hand, re-install the rear frame screw and tighten using the 1/8" Allen key.

### REMOVAL OF FOREGRIP ASSEMBLY

- Using a 1/16" Allen key, loosen the Foregrip Retention Set Screws. They do not need to be fully removed, only loosened.



- The Foregrip assembly will now slide down the front of the grip frame.



### INSTALLATION OF FOREGRIP

-To reinstall the Foregrip Assembly on to the frame and body. Slide the Foregrip assembly back onto the grip frame rail. Slide Foregrip assembly all the way up until it is back in place. Using the 1/16" Allen key, tighten the foregrip retention set screws. Do not over tighten the set screws as they can become damaged easily.

**Note:** If not installed correctly, you might damage the Circuit Boards!

[WWW.INVERTPAINTBALL.COM](http://WWW.INVERTPAINTBALL.COM)







# INVERT™

## FEATURES:

- WEIGHS IN AT 1.99 LBS. MAKING IT ONE OF THE LIGHTEST AND TIGHTEST ELECTRONIC MARKERS AVAILABLE
- OUTSTANDING VELOCITY CONSISTENCY
- BREAK BEAM ANTI-CHOP EYES STANDARD
- MULTI-MODE (NXL, PSP, NPPL, AND MILLENNIUM) FIRING CAPABILITY WITH EASY "TOURNAMENT LOCKOUT"
- CLAMPING FEED NECK
- NO HOSES TO CRIMP OR BREAK
- LOW PRESSURE
- 20+ BPS



MINI™

[WWW.INVERTPAINTBALL.COM](http://WWW.INVERTPAINTBALL.COM)

 [myspace.com/invertpaintball](http://myspace.com/invertpaintball)









**MINI™**

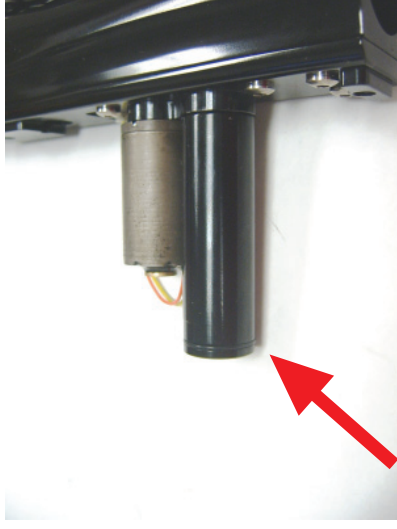
### REMOVAL OF GRIP FRAME

- Using a 1/8" Allen key, remove both grip frame screws turning counter-clockwise.
- Gently pull down frame from body.



### INSTALLATION OF GRIP FRAME

- Inspect the air transfer tube o-ring and lightly grease. As you install the grip frame, make sure the solenoid wires do not get pinched and hold the trigger in to prevent the trigger activation magnet from getting damaged. Gently push grip frame back on and line up the air transfer tubes.

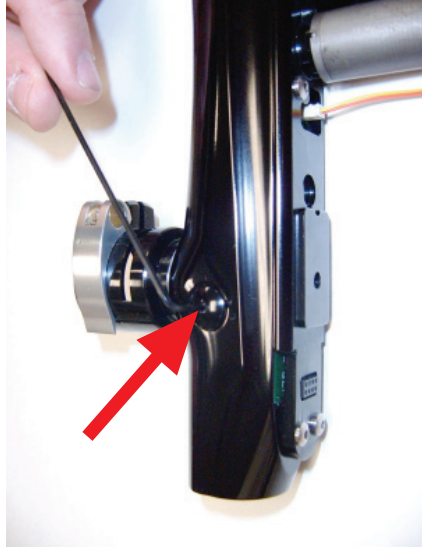


- When frame is back on, use the 1/8" Allen key and tighten the (2) grip frame screws clockwise.



### REMOVAL, INSTALLATION AND CLEANING OF BALL DETENTS

- Using a 5/64" Allen key, insert Allen key into detent cover and turn counter-clockwise.
- Clean the detents with a damp cloth and apply a small amount of grease to the outer sides of the detents if sticking is a issue.
- Installation is the reverse of the removal. Do not over tighten the Ball Detent covers!



**Note:** Be careful not to lose any of the detent parts as they are small.

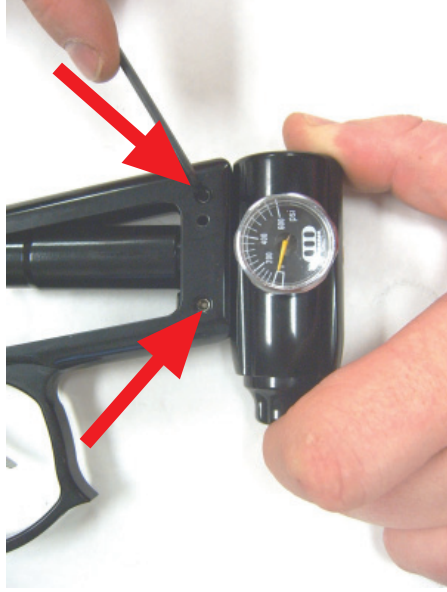




**MINI**<sup>™</sup>

### REMOVAL OF REGULATOR

- Loosen the two Regulator Mount Set Screws located on the grip frame with a 3/32" Allen key by turning them counter clockwise.
- The Regulator and Regulator Mount can now be pulled down and removed from the grip frame. Be careful not to lose the Female Air transfer tube bottom o-ring, which sits on the bottom of the Female air Transfer tube.



### INSTALLATION OF REGULATOR ASSEMBLY

- Make sure the Female air transfer Tube o-ring is on the bottom of the Air tube. Grease if necessary.
- Slide Regulator and Regulator rail back into the Grip frame and tighten the Regulator mount set screws with a 3/32" Allen key.

**Note:** There are also 2 set screws in the Regulator Rail, they should only need to be adjusted if the Regulator becomes loose.

### REMOVAL OF AIR TRANSFER PLATE

- Remove Foregrip and Grip frame.
- Carefully unplug the solenoid from the Sensor board.
- Remove the solenoid and Male air transfer tube from the Air transfer plate by unscrewing them counter-clockwise.
- Using a 5/64" Allen key remove all of the air transfer plate screws (7 total). Once the screws are removed the Air transfer plate will then lift off.



**Note:** Be careful not to lose the Check valve (air restrictor). The check valve is a small plastic piece located between the body and Air transfer plate.



### INSTALLATION OF AIR TRANSFER PLATE

- It is recommended that a small amount of Dow 33 grease is applied to the air transfer gasket before the air transfer plate is reattached.
- Also make sure the check valve is in the body, as seen in the picture above.
- Place transfer plate back on body and evenly tighten all 7 screws.
- Plug the solenoid back into the sensor board.





**MINI**<sup>TM</sup>

### **REMOVAL AND CLEANING OF SENSOR BOARD**

- Remove Foregrip, Grip Frame, and Air Transfer Plate as described in the steps above.
- Gently remove the sensor board from the body.
- Once board is removed, use a dry cloth to clean sensors, if paint is on the board, use a dry cloth to wipe paint off the board.



### **INSTALLATION OF SENSOR BOARD**

- When installing board back in main body, be careful that the sensors lineup correctly. The board should drop into the body very easily. Do Not force the Sensor board into the body.



This is not a toy. Misuse may cause serious injury or death. Eye Protection designed specifically for paintball must be worn by the user and persons within range. Recommend 18 years of age or older to purchase. Persons under 18 years of age must have adult supervision.

Your MINI must be clear of all paint and any source of propellant during transportation to and from the playing field. Keep your barrel blocking device in place. Keep the MINI Marker switched off. Protect your MINI from excessive heat during transportation.

Observe and obey all local, state and federal laws concerning the transportation of paintball markers. For information concerning any of the laws in your area, contact your nearby law enforcement agency.

If you must ship your MINI for any reason, the box in which you purchased the marker should be used to protect your marker against rough handling during transport.

Never ship charged CO2 or pressurized gas cylinders!

**IMPORTANT:** Never carry your MINI uncased when not on a playing field. The non-playing public and law enforcement personnel may not be able to distinguish between a paintball marker and firearm. For your own safety and to protect the image of the sport, always carry your MINI in a suitable marker case or in the box in which it was shipped.

### **13. STORAGE AND TRANSPORTATION**

- Your MINI must be clear of all paint and propellant when not being used.
- Make sure the MINI marker is Off: Push the Power button and hold for over 2 seconds until the Led light changes from Red to Green
- Put the barrel blocking device in its place. Make sure the marker is clean.
- Store your MINI in a clean, cool, dry place.
- Keep your MINI away from unauthorized and unsafe users.
- It may be a good idea to remove the battery when storing your MINI to prevent unauthorized use.





**MINI™**

## 14. MINI TROUBLESHOOTING

Note: If you are experiencing any problems and you are using any aftermarket parts, it is necessary to re-install the factory parts and re-test before attempting any troubleshooting, as non-factory aftermarket parts are not designed by Invert Paintball to work in the Mini, and they may be the cause of the problems. Do not contact Invert Paintball until you have returned the Mini to factory stock condition and tested.

Does not turn on	Make sure you have a fresh battery.	If you have tried several different batteries, check to make sure the battery harness is plugged in to the board properly. If it is, unplug the battery from the harness for 5 minutes, then plug back in and try again.
Doesn't fire	Make sure the marker is turned on.	Check the LED light on the back of the foregrip. The LED should be rapidly blinking green when a paintball is present.
	Make sure you have a paintball in the chamber.	The anti-chop eye system prevents the marker from firing unless a ball is present. Never put anything other than a paintball down the feed neck of the Mini.
	Trigger may need to be adjusted.	Check the LED light on the back of the foregrip. While holding in the trigger, the LED should stay red in the background, and not be red when the trigger is released. If it is not that way, then the trigger may need to be adjusted. See the "Adjusting your trigger" section earlier in the manual.
Doesn't fire with eyes turned off	Trigger may need to be adjusted.	Check the LED light on the back of the foregrip. While holding in the trigger, the LED should stay red in the background, and not be red when the trigger is released. If it is not that way, then the trigger may need to be adjusted. See the "Adjusting your trigger" section earlier in the manual.
	Solenoid may not be connected properly.	Check to make sure the solenoid is connected properly to the sensor board. If it is, the solenoid may need to be reset.
	Solenoid may need to be reset.	To reset the solenoid, with the eyes off, pull the trigger repeatedly until the solenoid makes a loud clicking sound again with each trigger pull, but do not pull the trigger more than 10 times, as this can damage the solenoid. If after 10 pulls the solenoid still doesn't click, it may need to be serviced.





Leaks constantly through the chamber	Poppet may need to be reset.	To reset the poppet, remove the gas source from your Mini. Gently turn the velocity adjuster all the way in until it stops. Then gas up your Mini. If the leak has stopped, proceed to back out the velocity adjuster 3/4 of a turn, then measure velocity with a chronograph and adjust as needed. If a small leak continues upon backing out the velocity adjuster, the air passage through the poppet may be blocked, or the poppet seal face may be worn and needs to be replaced. See page 14 for more info.
	Solenoid may need to be reset.	To reset the solenoid, with the eyes off, pull the trigger repeatedly until the solenoid makes a clicking sound again with each trigger pull, but do not pull the trigger more than 10 times, as this can damage the solenoid. If after 10 pulls the solenoid still doesn't click, it may need to be replaced.
Leaks from inside the trigger frame		In order to fix the leak, it is necessary to pinpoint where it is coming from. If you remove the grip, it is easier to detect where the leak is occurring. Review the schematic diagram for seal locations. Remember to remove the air source and de-gas the Mini before continuing with any disassembly.
Air coming out of body in front of trigger		During each shot, it is normal for a puff of air to exit the body just in front of the trigger.
Multiple balls fired from only one shot	Ball detents may be sticking open.	Remove both ball detent covers and clean the ball detents with a cloth. You may also add some grease to the outer surface of the detents to make sure they are not sticking within the covers.
	Loader forcing paintballs too hard into marker.	Try a different loader, such as the Empire Magna Drive Loader. If using a Halo series or Empire Reloader B series loader, try installing an Empire Magna Clutch Upgrade Kit.





**MINI**<sup>™</sup>

Shoots more than once from one trigger pull	Battery may be low.	Replace battery with a fresh Duracell or Energizer brand alkaline 9-volt.
	Trigger may need to be adjusted.	Make sure the trigger has plenty of travel both before and after the activation point.
Regulator leaks from bottom plug	Adjust over-pressurization relief valve.	The plug on the underside of the regulator is an over-pressurization relief. If it is leaking, most likely the regulator is set to too high of a pressure and needs to be lowered. If the regulator is set to 200 psi or less and the over-pressurization relief is still leaking, it is possible to turn the plug cap just a small amount in the clockwise direction, until the leak stops.
Regulator is slow to recharge	Air tank is not screwed all the way into the Mini's regulator ASA.	If during rapid firing the first ball comes out of the barrel at full velocity and following shots decrease substantially, watch the gauge on the Mini regulator to see if the needle drops down significantly and is slow to come back to the set pressure. This is typically the result of not screwing your air tank in enough. When screwing your air tank into the Mini's regulator ASA, it is important to not stop as soon as the marker pressurizes, but to continue turning until the air tank stops. It is also acceptable to install the air tank when it is empty, then have it filled by a professional while it is installed. This will ensure that you get the maximum air flow from your air tank.
Regulator pressure spikes	Regulator adjusted too high.	If the needle on the regulator's gauge climbs well over 200 psi when attempting to install the air tank, first remove the brass adjustment screw in the front of the regulator and try again to install the air tank. If the needle reads 0, reinstall the adjustment screw and turn in until the needle reads 200 psi.
Breaks paint in chamber	Eyes are turned off.	Only fire paintballs with the eyes on.
	Low quality or brittle paintballs.	Do a paintball drop test. On a level and smooth, hard, outdoor surface, such as concrete or asphalt pavement, drop ten paintballs one at a time from about 5 feet high. Don't toss them up or throw them at the ground, just drop them straight down. If more than 3 paintballs out of 10 break, the paintballs are bad and should not be used in the Mini. In the case of higher-end tournament-grade paintballs, it may be possible to tune the Mini to successfully fire brittle paintballs. Since all conditions are different, it is best to ask for help with this from your local pro shop.



**MINI**<sup>TM</sup>

Breaks paint in chamber	Loader pushing too hard.	Try a different loader, such as the Empire Magna Drive Loader. If using a Halo series or Empire Reloader B series loader, try installing an Empire Magna Clutch Upgrade Kit.
	Bolt or bolt guide o-rings may be worn.	Air blowing past worn o-rings can easily break paintballs in the feed neck. Replace the bolt o-rings and the smaller 3 bolt guide O-rings and apply fresh grease.
	Bolt front seal may be missing.	Make sure the bolt front seal is in place and has a light application of grease to reduce friction.
	Check valve may be missing.	Make sure the check valve is in place. Without the check valve, the forward force on the bolt is too great and can be too hard on the paintballs.
	Ball detents may be dirty or worn.	Clean the ball detents. If necessary, apply a small amount of grease around the outer surface to reduce friction inside the ball detent covers. Replace if tips are worn down.
	Regulator pressure may be set too high.	Lower regulator pressure.
	Bolt or bolt guide o-rings may need grease.	Clean off old grease from the bolt and bolt guide o-rings, as well as the bolt front seal, and apply fresh grease.
Cycles very slow	Rate of Fire setting may be adjusted too low.	Raise Rate of Fire setting.
	Loader may not be feeding fast.	Check your loader's batteries or use a faster loader.
Inconsistent velocity	Pressure may be set too low.	Low pressures have difficulty supplying enough volume to maintain a consistent velocity. Do not lower your Mini's regulator pressure below 180 psi.





Inconsistent velocity	Marker may need to be greased.	Clean old grease from the poppet, the bolt and bolt guide o-rings and apply fresh grease. Do not use too much, as it will prevent the moving parts from cycling smoothly.
	Dwell may be set too low or too high.	Reset the dwell setting to the factory default.
	Check valve may be missing.	Make sure the check valve is in place.
	Battery may be low.	Replace battery with a fresh Duracell or Energizer brand alkaline 9-volt.
	Poppet o-ring may be worn.	Replace poppet o-ring and apply fresh grease.
	Regulator pressure may be set too high.	Lower regulator pressure.
	Air tank is not screwed all the way into the Mini's regulator ASA.	If during rapid firing the first ball comes out of the barrel at full velocity and following shots decrease substantially, watch the gauge on the Mini regulator to see if the needle drops down significantly and is slow to come back to the set pressure. This is typically the result of not screwing your air tank in enough. When screwing your air tank into the Mini's regulator ASA, it is important to not stop as soon as the marker pressurizes, but to continue turning until the air tank stops. It is also acceptable to install the air tank when it is empty, then have it filled by a professional while it is installed. This will ensure that you get the maximum air flow from your air tank.
Scratches on bolt	Spring may be damaged.	This can cause negative performance. The main spring should be repaired by a trained technician or it can just be replaced.
Leaks some-times while shooting multiple shots	Poppet may be sticking open.	Clean the old grease from the poppet o-ring and apply fresh grease. If that doesn't help, replace the poppet o-ring and apply fresh grease.





**MINI**<sup>TM</sup>

Leaks sometimes while shooting multiple shots	Battery may be low.	Replace battery with a fresh Duracell or Energizer brand alkaline 9-volt.
	Solenoid may be sticking open.	If the solenoid is sticking open occasionally, the regulator pressure may be set too high. If the pressure is set to 200 psi or less, then the solenoid may be filled with dirt and/or grease. See Maintenance section for instructions on how to clean the solenoid.

## 15. DIAGRAM AND PARTS LIST

<b>PART #</b>	<b>DESCRIPTION</b>	<b>SKU #</b>
1	Body - Black	17505
2	Grip Frame - Black	17509
5	Foregrip Body - Black	17515
6	Foregrip Side Plate - Black	17519
7	Foregrip Retention Set Screw	17523
8	Main Board	17524
9	Battery Harness	17525
10	Foregrip Screw	17526
11	Sensor Board	17527
12	Solenoid	17528
19	Air Transfer Plate - Black	17577
20	Air Transfer Plate Screw	17529
21	Air Transfer Gasket	17530
22	Check Valve	17531
23	Bolt	17532
24	Bolt Rubber Tip	17533
25	Bolt/Bolt Guide Large Oring	17534
26	Main Spring	17535
27	Bolt Guide	17536



**MINI™****15. DIAGRAM AND PARTS LIST....CONTINUED**

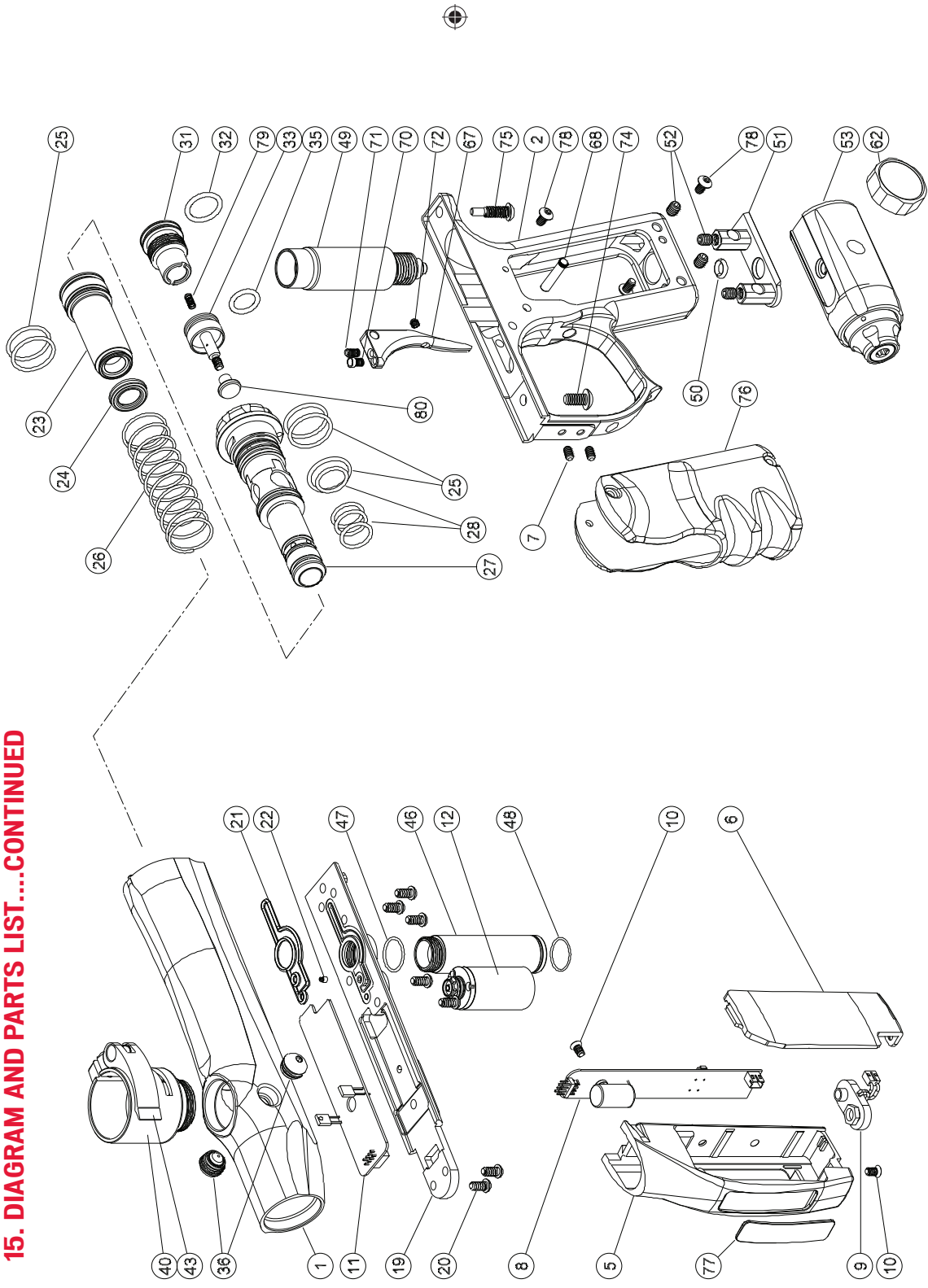
<b>PART #</b>	<b>DESCRIPTION</b>	<b>SKU #</b>
28	Bolt Guide Small (Front) Oring	17537
31	Bolt Guide Cap	17583
32	Bolt Guide Cap Oring	17538
33	Poppet Assembly with Spring	17628
35	Poppet Oring	17540
36	Ball Detent (Complete)	17541
40	Feed neck (Complete) - Silver Latch	17585
43	Feed neck Clamp - Silver	17546
46	Air Transfer Tube Male	17551
47	Air Transfer Tube Male Top Oring	17552
48	Air Transfer Tube Male Bottom Oring	17553
49	Air Transfer Tube Female	17554
50	Air Transfer Tube Female Oring	17555
51	Regulator Mount	17556
52	Regulator Mount Set Screw	17557
53	Bottom-line Regulator (Complete)	17558
62	Regulator Gauge	17596
67	Trigger - Black	17560
68	Trigger Pin	17562

<b>PART #</b>	<b>DESCRIPTION</b>	<b>SKU #</b>
70	Trigger Set Screw W/ Magnetic Top	17564
71	Trigger Set Screw Long	17602
72	Trigger Set Screw Short	17603
74	Primary Body Retention Screw	17565
75	Bolt Guide Alignment Screw	17566
76	Grips - Urban Camo	17605
77	Foregrip Rubber - Urban Camo	17608
78	Grip Panel Screw	17567
79	Poppet Spring	17623
80	Poppet Seal	17629



**MINI**<sup>TM</sup>

**15. DIAGRAM AND PARTS LIST ....CONTINUED**







**MINI™**

## **16. WARRANTY INFORMATION**

**- INVERT PAINTBALL LIMITED WARRANTY**

Invert Paintball warrants the replacement of any original part due to defect in materials and/or workmanship of this marker. This warranty will be in effect for twelve (12) months for parts and twelve (12) months for labor following the original date of purchase for the original purchaser. Warranty is only retained if the marker is purchased as new; markers purchased used are not covered by warranty. Such warranty service will be provided only if the warranty registration card included with this manual is filled in completely and a copy of the original receipt is on file at Invert Paintball. All other services will be duly charged by over the phone credit card and shipped UPS.

Invert Paintball will replace, without charge, any original part that is determined by Invert Paintball to be defective under the terms of this warranty. However, shipping charges are not covered hereunder. Failure due to an accident, abuse, neglect, modification, loss, normal wear, operator error, maintenance by other than an authorized Invert Paintball dealer, or use of parts inconsistent with the use originally intended for the marker as sold, is not covered by this warranty. This warranty does not apply to wearable parts such as o-rings, screws, poppet seal, ball detents, etc.

There are no other warranties or guarantees, expressed or implied, made by Invert Paintball on this marker. The sole and exclusive liability of Invert Paintball and/or its authorized dealers, affiliates, or agents pursuant to this warranty will be for repair or replacement of the defective part; incidental or consequential damages are expressly excluded hereunder.

Removing or disassembly of the original regulator voids all warranties, unless replaced with another MINI Bottom-line Regulator produced by Invert Paintball.

If marker is to be sent in for repair, the marker must consist of all factory stock parts. Markers with aftermarket parts will not be warranted.

For warranty parts, service or information contact:

**Paintball Solutions**  
[www.paintballsolutions.com](http://www.paintballsolutions.com)  
55 Howard Ave,  
Des Plaines, IL 60018  
1-800-220-3222

**WWW.INVERTPAINTBALL.COM**



**MINI**<sup>TM</sup>



**WARRANTY REGISTRATION**

**SEND TO:**  
**PAINTBALL SOLUTIONS**  
**570 MANTUA BLVD.**  
**SEWELL, NJ 08080**  
**800-220-3222**  
**WWW.PAINTBALLSOLUTIONS.COM**

**PURCHASE INFORMATION**

**PURCHASED FROM:** \_\_\_\_\_  
**CITY:** \_\_\_\_\_ **STATE:** \_\_\_\_\_ **ZIP:** \_\_\_\_\_

**SERIAL:** \_\_\_\_\_

**OWNER INFORMATION**

**YOUR NAME:** \_\_\_\_\_

**CITY:** \_\_\_\_\_ **STATE:** \_\_\_\_\_ **ZIP:** \_\_\_\_\_

**PHONE:** \_\_\_\_\_ **EMAIL:** \_\_\_\_\_





**INVERT™**

**OOO**  
**MINI™**



[WWW.INVERTPAINTBALL.COM](http://WWW.INVERTPAINTBALL.COM)



KEEP ACTION SPORTS  
570 MANTUA BLVD.  
SEWELL, NEW JERSEY, 08080  
PHONE: (856)464-1068 FAX: (856)464-1262  
WWW.INVERTPAINTBALL.COM